

# FOR RENT HISTORIC BUILDING

Fully ADA-Compliant



11,000 sq ft in 3-4 floors of "Castle" for annual lease by individual office, by floor or entire castle. Available September 1, 2010

11,000 sq ft majestic Drill Hall by day, week or monthly rentals. Available June 1, 2010



PAWTUCKET  
**ARMORY**  
CENTER FOR THE  
**arts**

172 Exchange St., Pawtucket, RI 02860  
For more information, contact:  
Lauren Van Dyke  
401-721-0723

The Annex of the Pawtucket Armory Center for the Arts (The Gamm Theatre Space) is NOT available for lease.

Unit	rentable sq ft	Annual	Monthly	Description
001	1358	20,400	1700	Ground Floor Suite with 2 rooms <i>leased</i>
003	1188	17,820	1485	Ground Floor Office <i>leased</i>
101	1,329	18,000	1500	First Floor Suite with 3 rooms
102	1,194	18,000	1500	First Floor Suite with 2 rooms
105	227	3,600	300	First Floor Office
		0	0	
201	1,329	19,800	1650	Second Floor Suite with 3 rooms
204	1,194	18,000	1500	Second Floor Suite with 2 rooms <i>leased</i>
205	313	4,800	400	Second Floor Office
301	439	6,600	550	Third Floor Suite with 2 rooms
302	702	10,800	900	Third Floor Office
304	420	6,300	525	Third Floor Office <i>leased</i>
305	1,070	16,800	1400	Third Floor Office
Drill Hall	11,000	850/day		Enquire for available dates
		400/day for non-profit fundraisers		

## ABOUT THE ARMORY

The Armory is a three-story castle located in the heart of Pawtucket's Arts District, possessing a stunning view of other historic buildings and the Blackstone River from its two crenellated towers. A unique historical site, with former incarnations as a National Guard headquarters and the J. M. W. School, the Armory is perfect as your office or classroom. The building encompasses both the space for lease and the highly successful Sandra Feinstein-Gamm Theater.

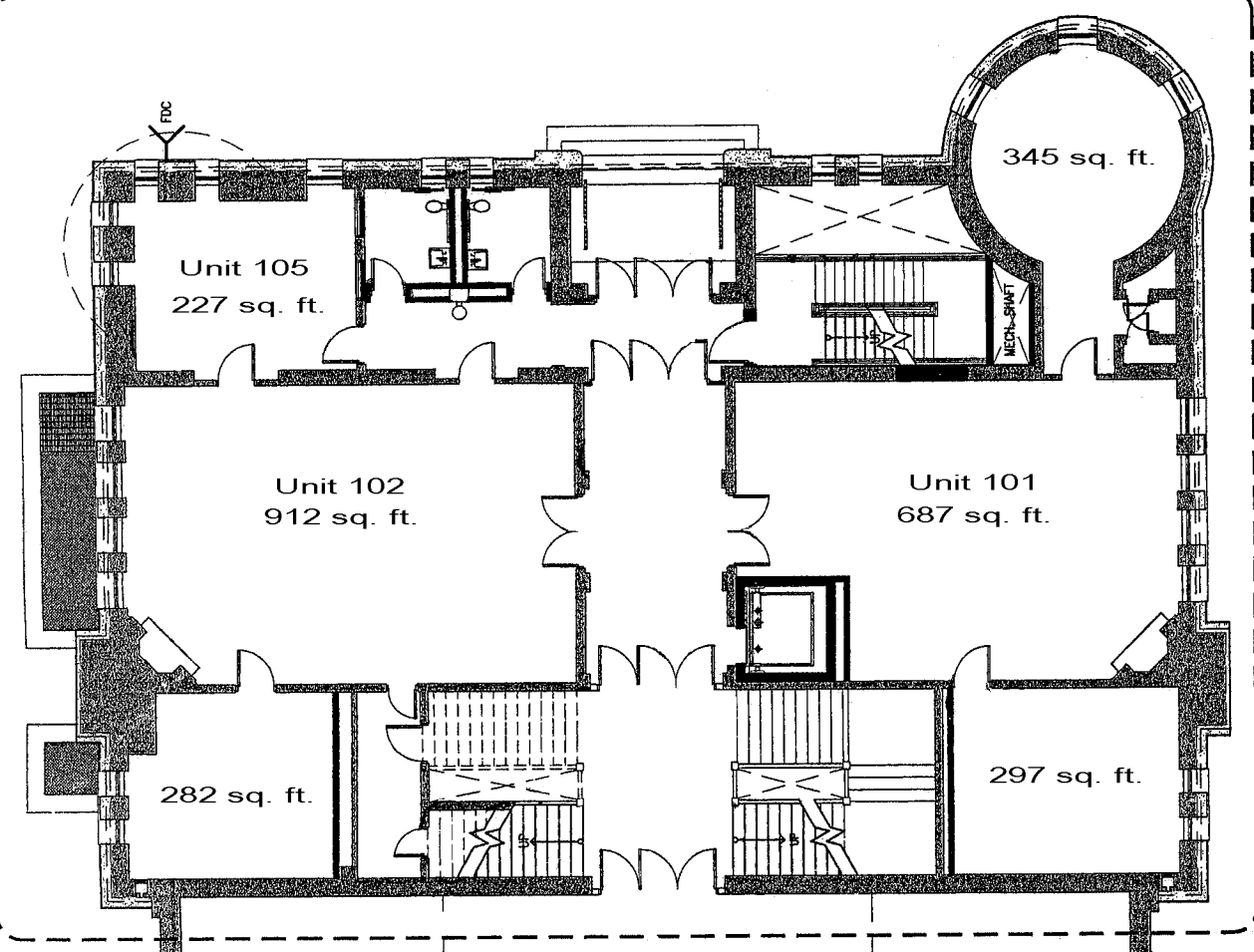
In the last five years, this majestic edifice has seen an investment of over \$5.1 million into its facilities, including central HVAC with individual controls in each room for customized comfort, completely new wiring, and convenient restroom facilities on every floor with new appliances. Despite all these changes, however, we kept true to the heart of the building. Expanses of stunning wood floors, original fireplaces in several offices, and period light fixtures will catch your visitors' breath. The entrance is both secure and inviting with its combination of state-of-the-art alarm systems and antique oak doors.

A beautiful space inside and out, it is also environmentally-friendly. Large windows create elegant, sunlit rooms, where you will hardly notice the light switch until nightfall. For cloudier days, rooms are equipped with motion detectors to save electricity when they are unoccupied, and energy-efficient LED lights keep the bills down.

Parking is plentiful, close to the building, and well-lit, with additional space conveniently nearby. The building is handicap-accessible and ADA-compliant, making it ready for whatever your business has to offer. The attached Drill Hall can accommodate functions as large as 1500 people, and its lofty ceiling makes your speaker's every word or your musician's every note as grand as the space itself. In the past, it has been used for concerts, military parades, and The Gamm's 25<sup>th</sup> anniversary gala, to name a few; it is one of the most versatile spaces in New England.

With soaring towers and solid, fortress-like design, this building inspires both productivity and creativity in everyone who walks in. Passing through the massive front doors, over a 19<sup>th</sup> century mosaic featuring the state's motto of Hope, and into our richly-decorated foyer, you will know you are entering an environment that simultaneously offers a rooted past and a limitless future.





Drill Hall  
11,000 sq. ft.

